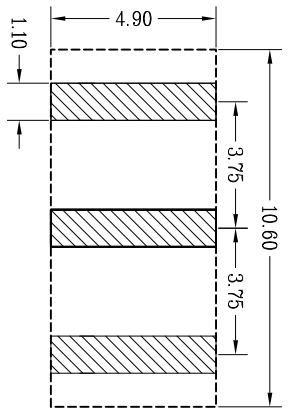
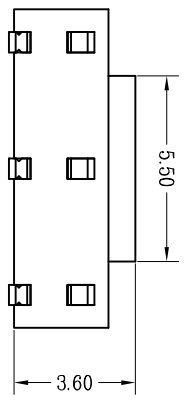
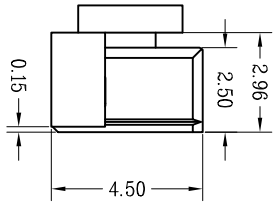
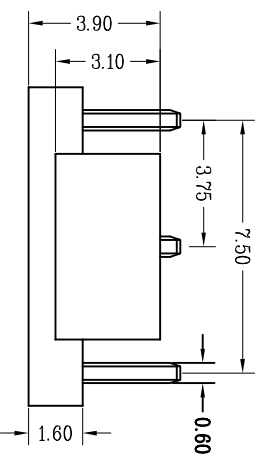
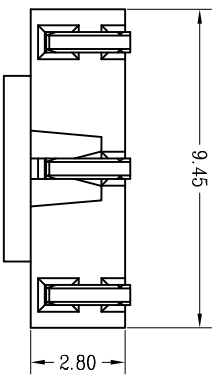


REV.	EGN.NO.	MODIFY CONTENT	DATE
A		NEW	2011/10/31

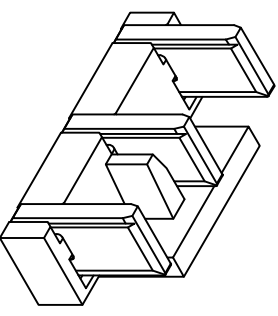


RECOMMENDED PCB LAYOUT

- NOTES:
1. CONTACT CURRENT RATING: 1.0A.
 2. CONTACT RESISTANCE: 50 mΩ MAX.;
 3. INSULATION RESISTANCE: 1000Ω MIN.;
 4. DIELECTRIC WITHSTANDING: 300V AC MIN.;
 5. DURABILITY: 5,000 CYCLES MIN.;
 6. CONNECTOR MATING FORCES: 29.8N (3.00KgF) MAX.;
 7. CONNECTOR UNMATING FORCES: 3N(0.31kgf) MIN.;
 8. PRODUCT MEET THE REQUEST OF THE RoHS, SEE TABLE A:


TABLE A:

MATTER	RoHS (PPM)
Cd	≤ 100
Pb	≤ 1000
Hg	≤ 1000
Cr+6	≤ 1000
PBB	≤ 1000
PBDE	≤ 1000

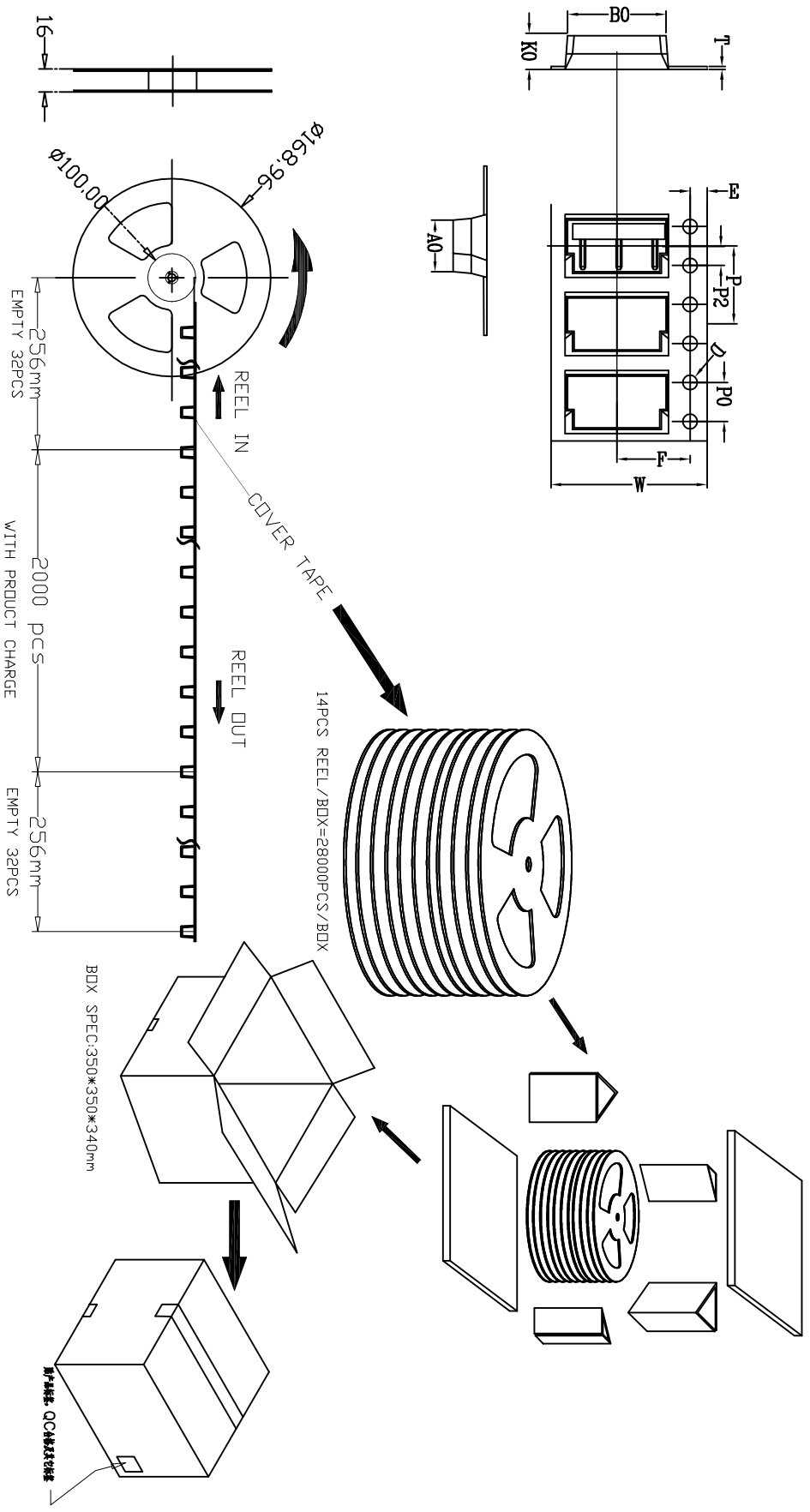


ITEM	PART NAME	Q'TY	MATERIAL	DESCRIPTION	REMARK
②	HOUSING	1	LCP+30%G.F		BLACK
①	CONTACT A	3	PHONPHOR BRONZE 0.60T	Gold Flash	

GENERAL TOLERANCE		DWG NO.	JYSA0613-001	APPD:	WMD	Scale	1:1
X±0.45	X:±5°	Title	BATTERY 3PIN CONNECTOR H2.5 规格 1=0.6 (NOKIA 8600)	CHKD:		UNIT	mm
X±0.35	X'±2°	Part NO.	JYS-BY250-127	DR:		UNIT	mm
.XX±0.25	.XX'±1°			Date	2011/10/31		
.XXX±0.15	.xxx±0.5°						
SHEET	1/1						


 杰宇森电子有限公司
 JIE YU SEN ELECTRONIC CO., LTD.

ITRM	W	A0	B0	K0	P	F	E	D	P0	P2	T
DIM	16.0	5.0	9.80	3.55	8.0	7.50	1.75	1.50	4.00	2.00	0.30
TITLE	+0.30	+0.10	+0.10	+0.10	+0.10	+0.15	+0.10	+0.10	+0.10	+0.15	+0.05
	-0.30	-0.10	-0.10	-0.10	-0.10	-0.15	-0.10	-0.00	-0.10	-0.15	-0.05



备注:

- 1、包装材料: PS
 - 2、剥离力: 0.3~1N(剥离量在0.3N内);剥离角度 65°~175°
- 剥离速度: 250~300 mm/min

REV.	EGN.NO.	MODIFY/CONTENT	DATE
A		NEW	2011/10/31

GENERAL TOLERANCE		DWG NO.	JYSA0613-001	APPD:	WMD	Scale	1:1
X±0.45	X:±5'	Title	BATTERY 3PIN CONNECTOR H2.5 无柱	CHKD:		UNIT	mm
X±0.35	X'±2'	Part NO.	JYS-BY250-127	DR:			
.XX±0.25	.XX'±1'			Date	2011/10/31		
.XXX±0.15	.xxx'±0.5'						
SHEET	1/1						

杰宇森电子有限公司
JIE YU SEN ELECTRONIC CO., LTD.