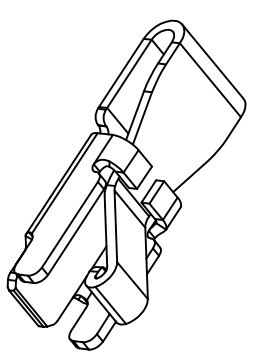
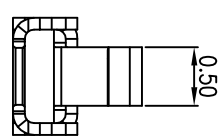
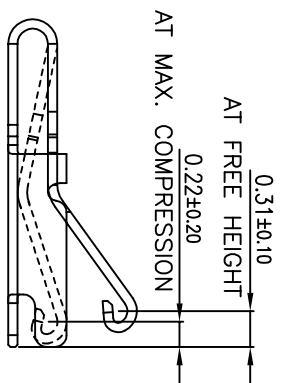


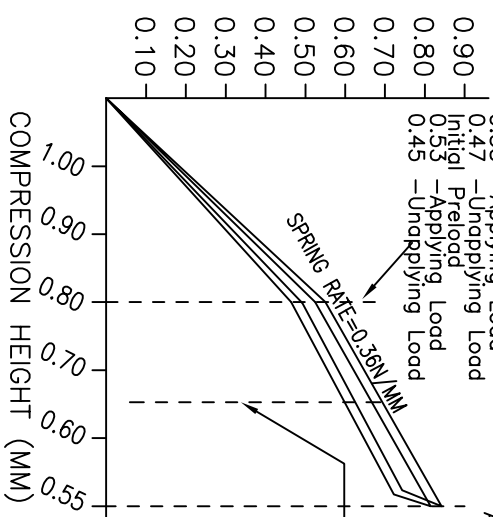
TOLERANCE: ± 0.05



NOTES:

1. MATERIAL:
 - 1.1 COPPER ALLOY
2. PATING:
 - 60~150U" NI UNDERPLATING OVER ALL
 - 1U" MIN AU ON SOLDERING AREA
 - 3U" MIN AU ON CONTACT AREA
3. SPECIALITY:
 - 2.1 CONTACT RESISTANCE: 30M Ω MAX
 - 2.2 OPERATING TEMPERATURE: -40C~+85C
 - 2.3 MAX. BEAM DEFLECTION: 0.55MM ON CONTACT POINT
4. RF PERFORMANCE:
 - 3.1 IMPEDANCE: 50 OHM.
 - 3.2 INSERTION LOSS: 0.6DB MAX (DC~3GHZ)
 - 3.3 VSWR: 1.5 MAX (DC~3GHZ)

NORMAL FORCE



LOAD/DEFLECTION GRAPH
MINIMUM FORCE
TOLERANCE +0.25N / -0.0N

LOAD AT 0.55 MM HEIGHT
INITIAL = 0.84 N (APPLYING LOAD)
AFTER 3 x REFLOW = 0.76 N

INITIAL FORCE AT 0.65MM
COMPRESSION =
0.64N (APPLYING LOAD)
0.59N (UNAPPLYING LOAD)
AFTER 3 x REFLOW =
0.62N (APPLYING LOAD)
0.56N (UNAPPLYING LOAD)
INITIAL FORCE ONLY TO BE
MONITORED BY SPC

GENERAL TOLERANCE		DWG NO.	JYSA0528-012	APPD:	WHD	Scale	1:1
X \pm 0.20	X \pm 2.0°	Title	天线弹片 L2.8*W1.0*H1.1	CHKD:		UNIT	mm
X \pm 0.10	X \pm 1.0°	Part NO.	JYS-TP110-016	DR:		Date	2013/10/31
XX \pm 0.05	.XX \pm 0.5°						
.XXX \pm 0.03	.xxx \pm 0.5°						
SHEET	1/1						



杰宇森电子有限公司
JIE YU SEN ELECTRONIC CO., LTD.

REV.	ECH. NO.	MODIFY CONTENT	DATE
A		NEW	2013/10/31